



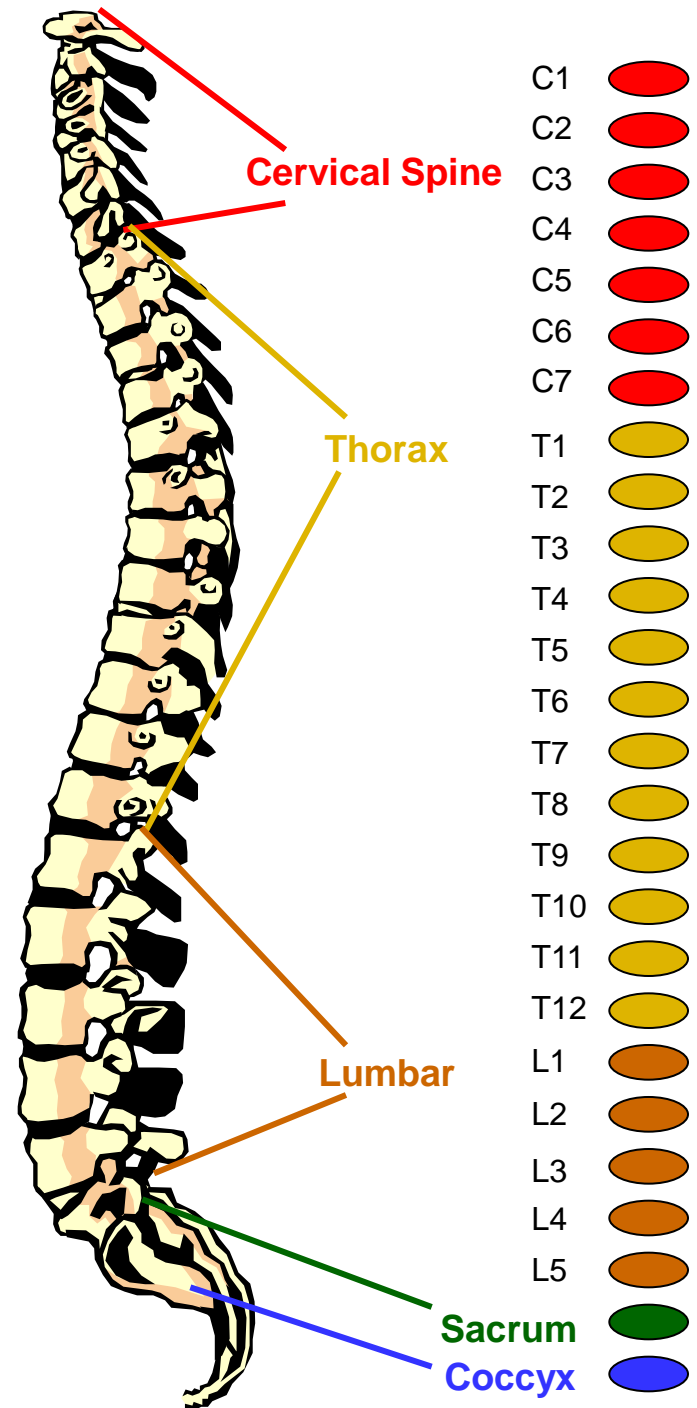
Virtual Tour of the Spine

How can one tiny vertebra effect your total health?

When a spinal vertebra shifts out of alignment, it may put damaging pressure on the spinal nerves causing interruption to the vital nerve flow within your body. This condition is referred to as

VERTEBRAL SUBLUXATION.

To find out more about how each little bone of your spine contributes to your total health click on the individual circles corresponding to each vertebra on the right.





Virtual Tour of the Spine

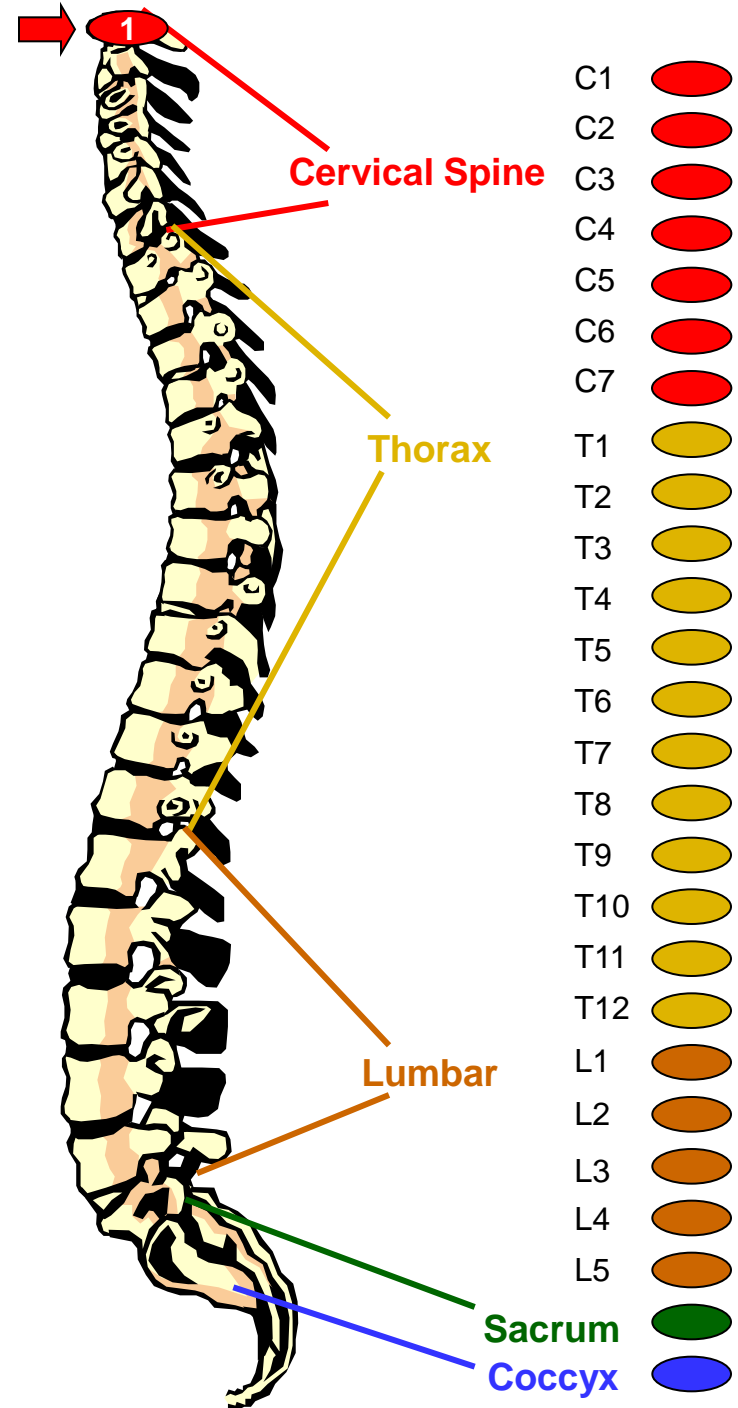
C1 or Atlas Vertebra

Areas controlled by Nerves:

- Blood supply to the head
- Pituitary gland
- Scalp
- Bones in the face
- Brain
- Inner & Middle Ear
- Sympathetic Nervous System

Possible Effects of Malfunction (due to subluxation)

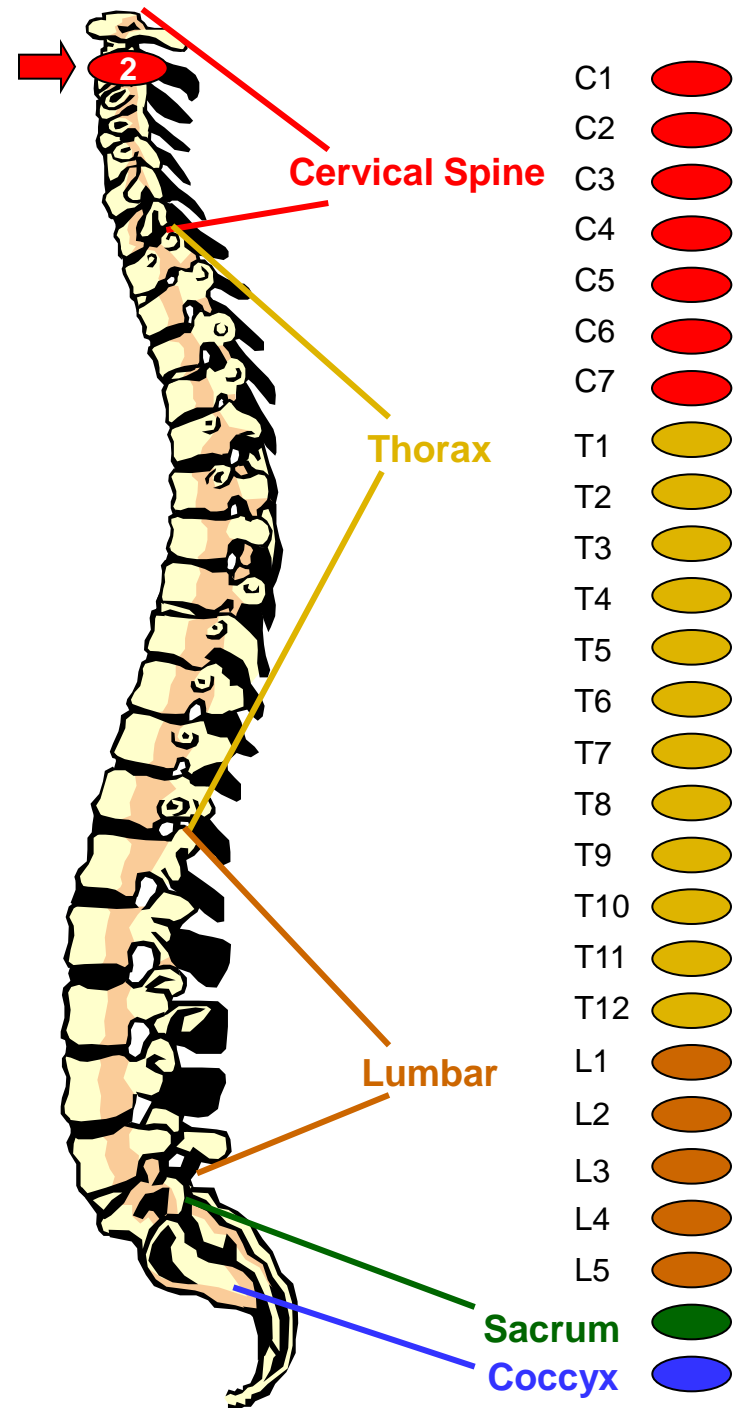
- Headaches
- Nervousness
- Insomnia
- Head colds
- High blood pressure
- Migraine headaches
- Nervous breakdowns
- Amnesia
- Chronic tiredness
- Dizziness





Virtual Tour of the Spine

C2 or Axis Vertebra



Areas controlled by Nerves:

- Eyes
- Optic nerves
- Auditory nerves
- Sinus
- Mastoid bones
- Tongue
- Forehead

Possible Effects of Malfunction (due to subluxation)

- Sinus trouble
- Allergies
- Cross eyes
- Deafness
- Eye trouble
- Earaches
- Fainting spells
- Vision difficulties





Virtual Tour of the Spine

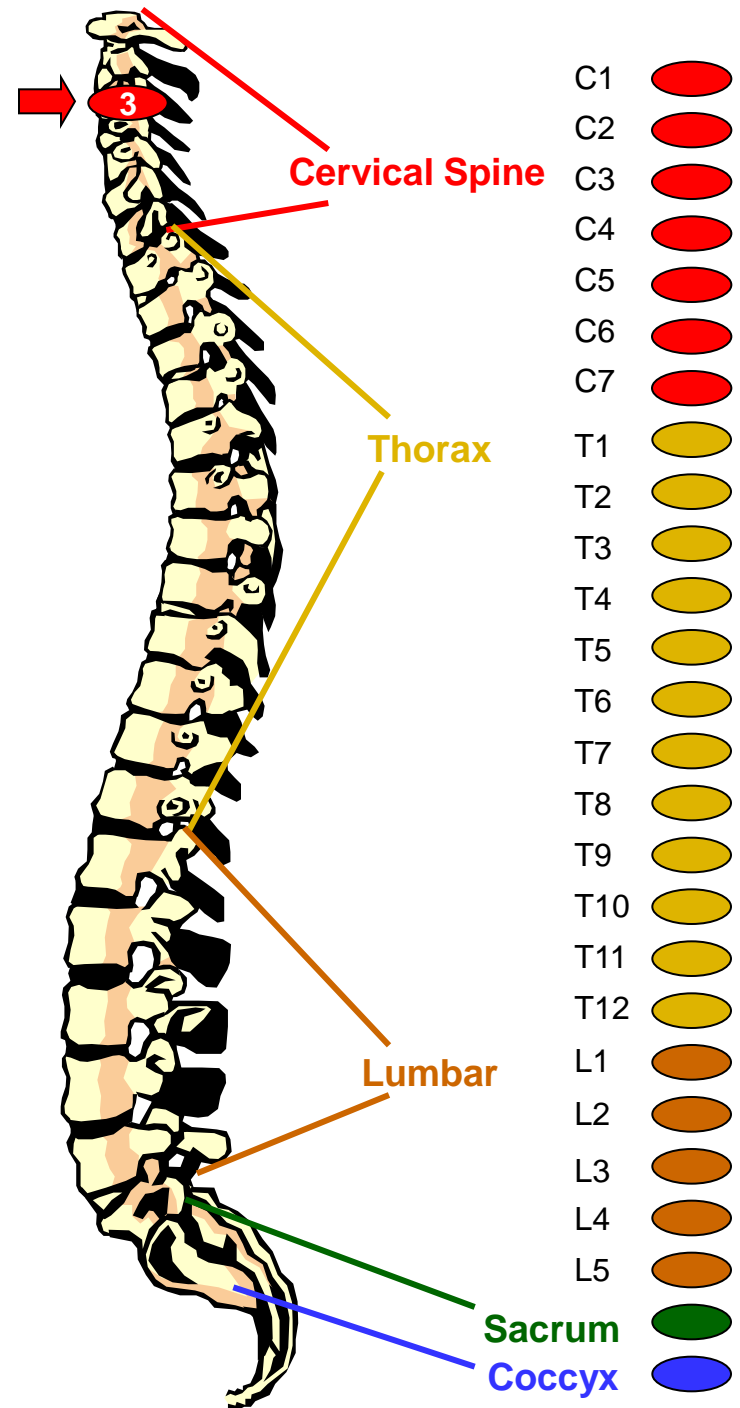
3rd Cervical Vertebra

Areas controlled by Nerves:

- Cheeks
- Outer ear
- Face Bones
- Teeth
- Trifacial nerve

Possible Effects of Malfunction (due to subluxation)

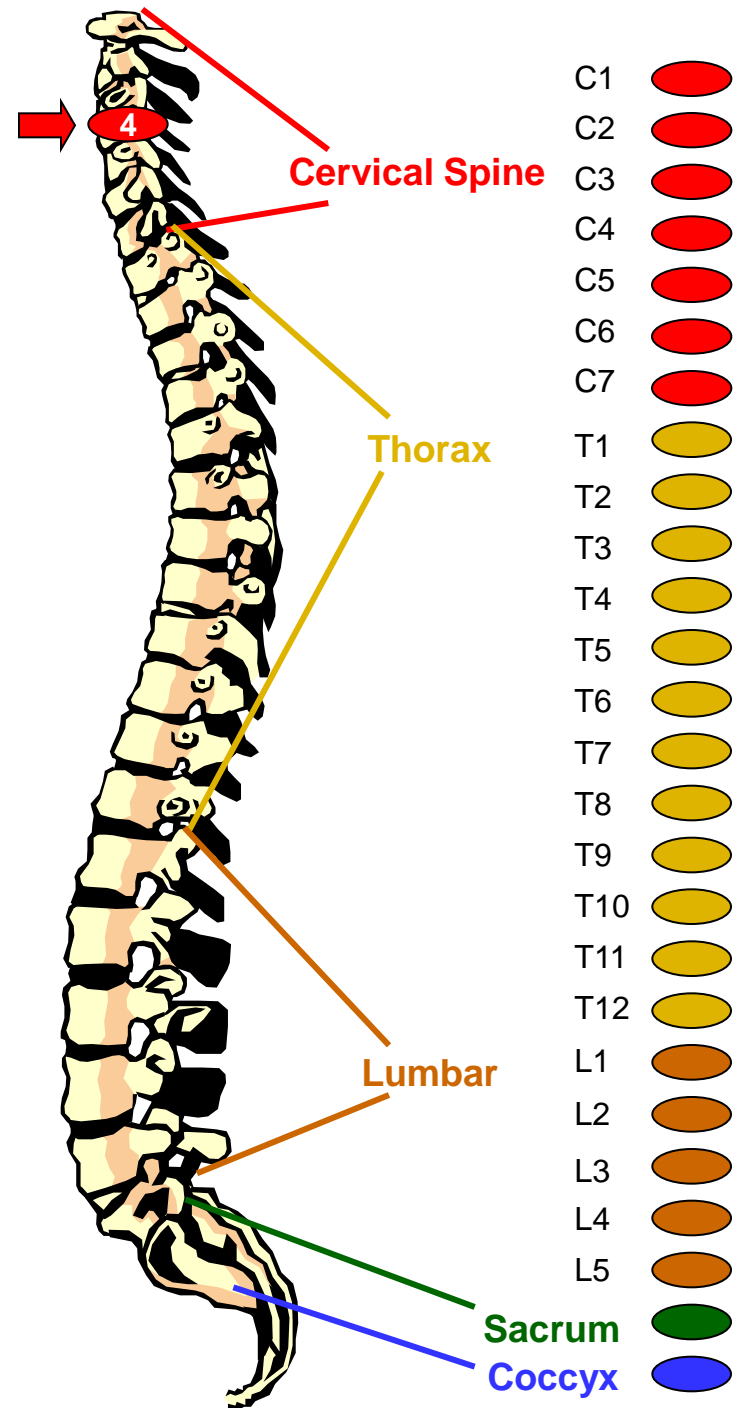
- Neuralgia
- Neuritis
- Acne or pimples
- Eczema





Virtual Tour of the Spine

4th Cervical Vertebra



Areas controlled by Nerves:

- Nose
- Lips
- Mouth
- Eustachian Tube

Possible Effects of Malfunction (due to subluxation)

- Hay fever
- Catarrh
- Hearing loss
- Adenoids





Virtual Tour of the Spine

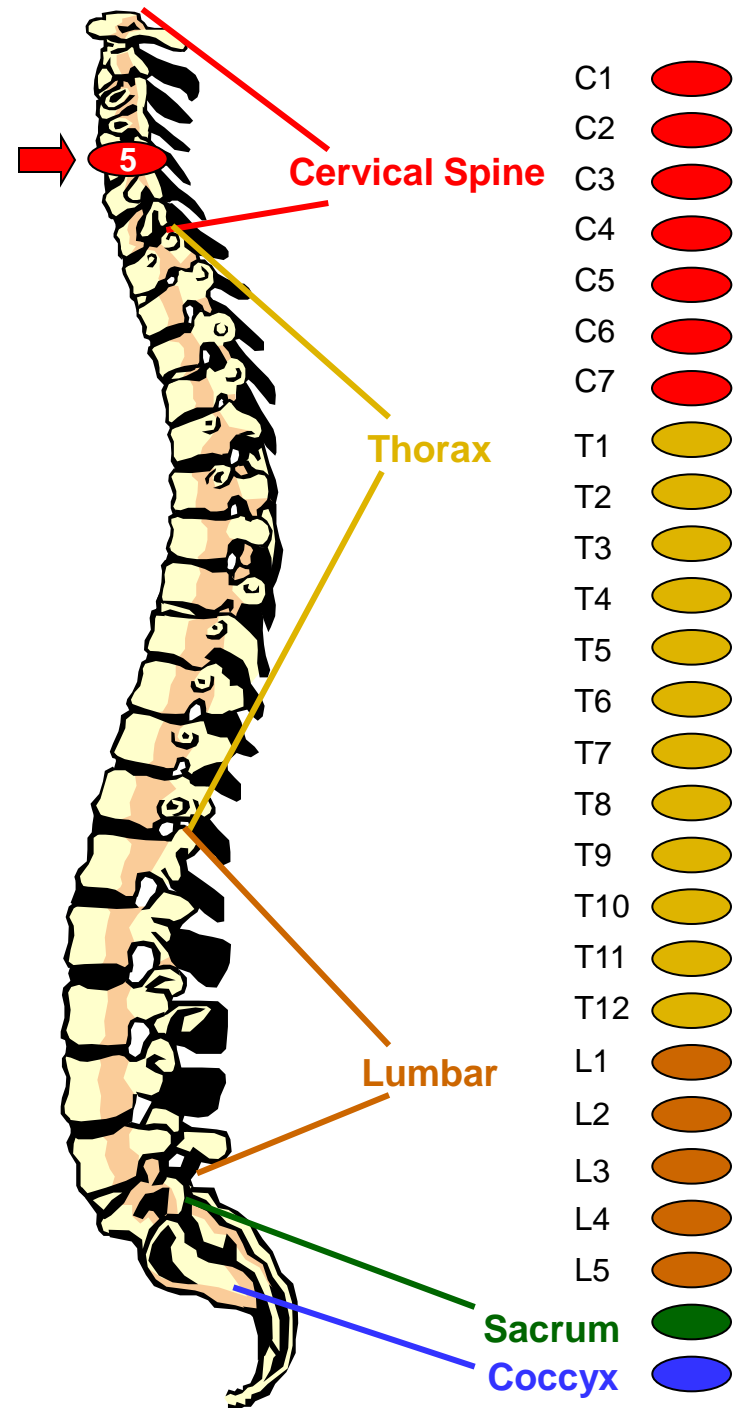
5th Cervical Vertebra

Areas controlled by Nerves:

- Vocal cords
- Neck glands
- Pharynx

Possible Effects of Malfunction (due to subluxation)

- Laryngitis
- Hoarseness
- Sore throats
- Quinisy





Virtual Tour of the Spine

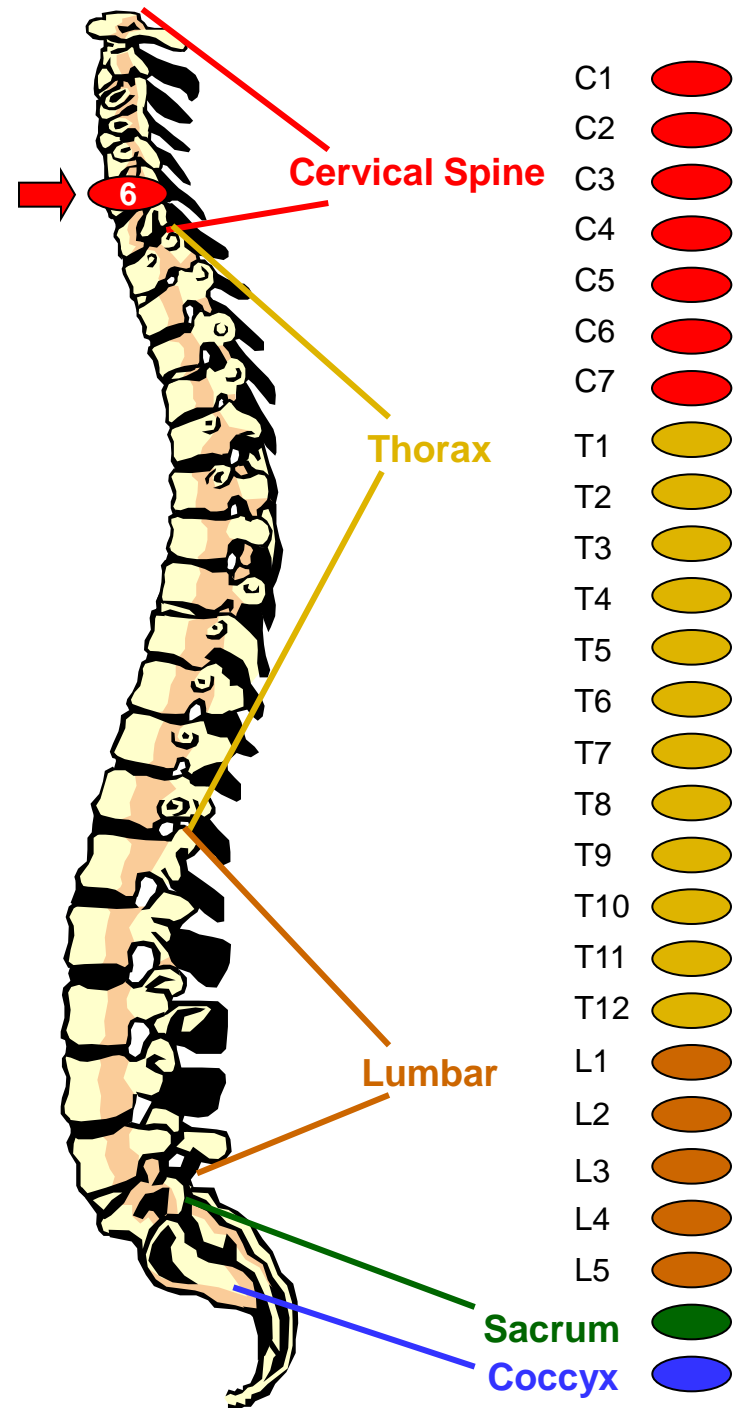
6th Cervical Vertebra

Areas controlled by Nerves:

- Neck muscles
- Shoulders
- Tonsils

Possible Effects of Malfunction (due to subluxation)

- Stiff neck
- Pain in upper arm
- Tonsillitis
- Whooping cough
- Croup





Virtual Tour of the Spine

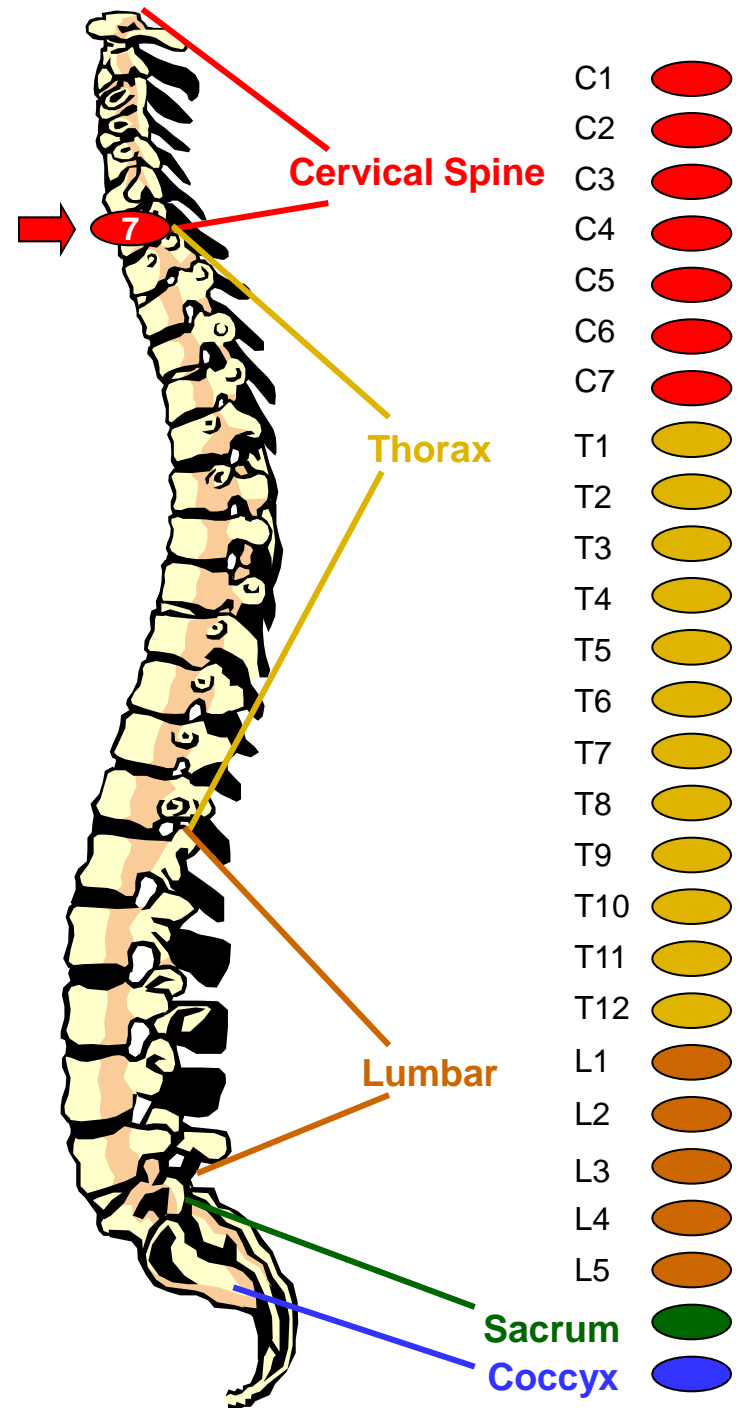
7th Cervical Vertebra

Areas controlled by Nerves:

- Thyroid gland
- Bursae in the shoulders
- Elbows

Possible Effects of Malfunction (due to subluxation)

- Bursitis
- Colds
- Thyroid conditions





Virtual Tour of the Spine

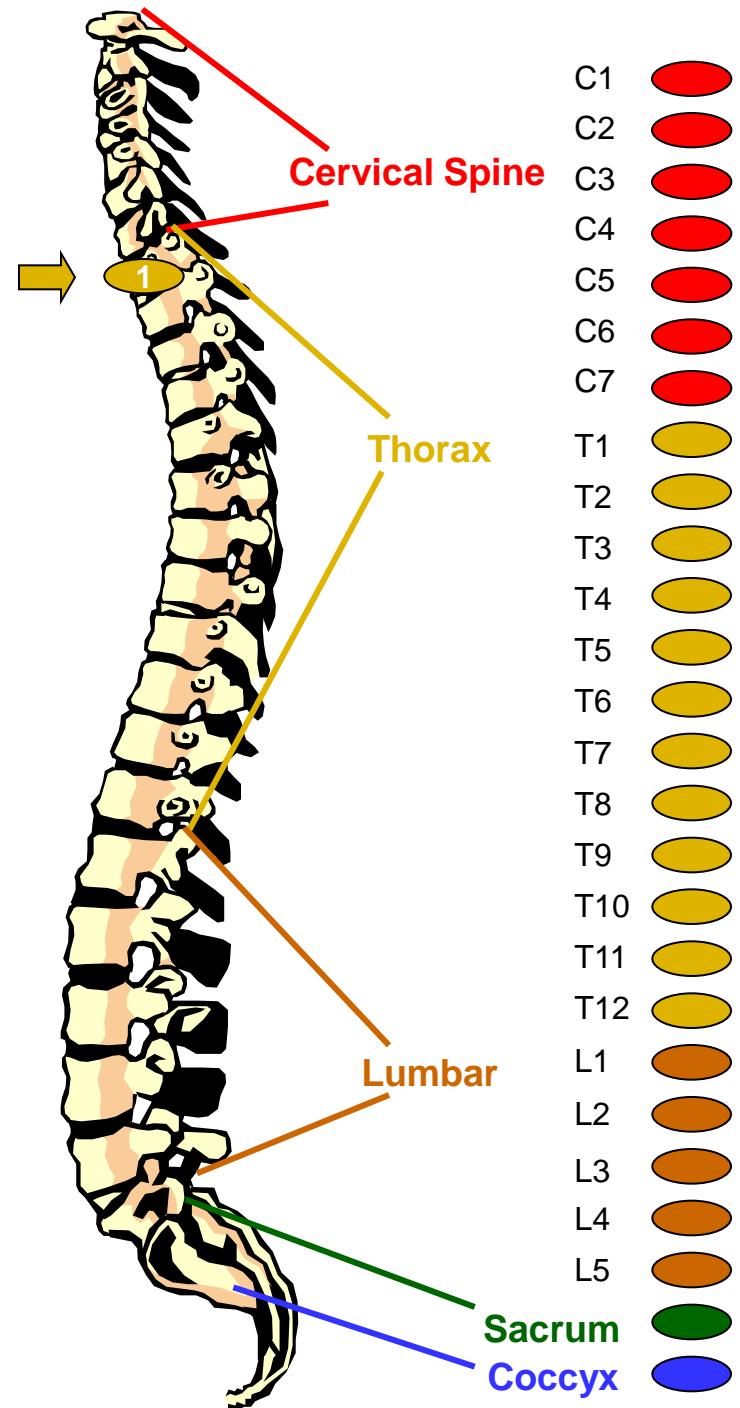
1st Thoracic Vertebra

Areas controlled by Nerves:

- Arms from the elbows down including hands
- Wrists and fingers
- Esophagus and trachea

Possible Effects of Malfunction (due to subluxation)

- Asthma
- Cough
- Difficulty breathing
- Shortness of breath
- Pain in lower arm
- Pain in hands





Virtual Tour of the Spine

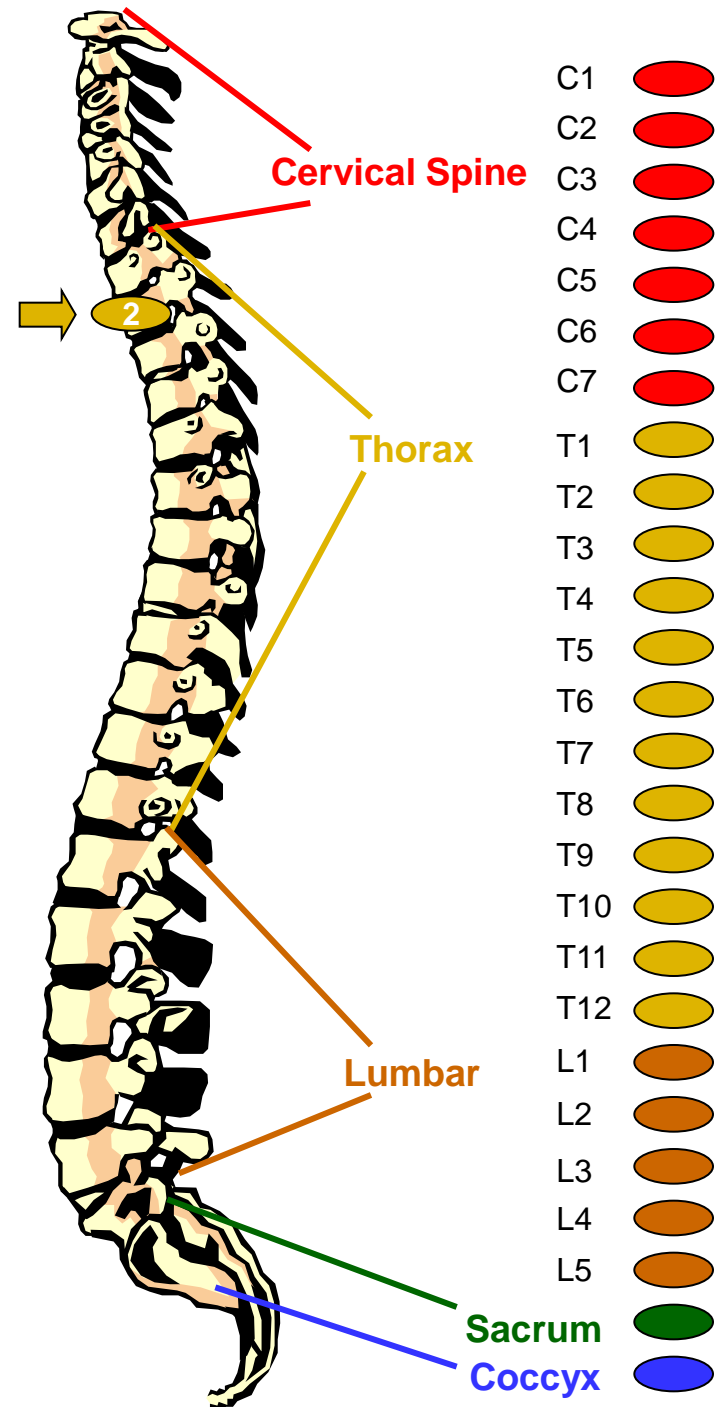
2nd Thoracic Vertebra

Areas controlled by Nerves:

- Heart
- Heart valves
- Pericardium
- Coronary arteries

Possible Effects of Malfunction (due to subluxation)

- Functional heart conditions
- Chest conditions





Virtual Tour of the Spine

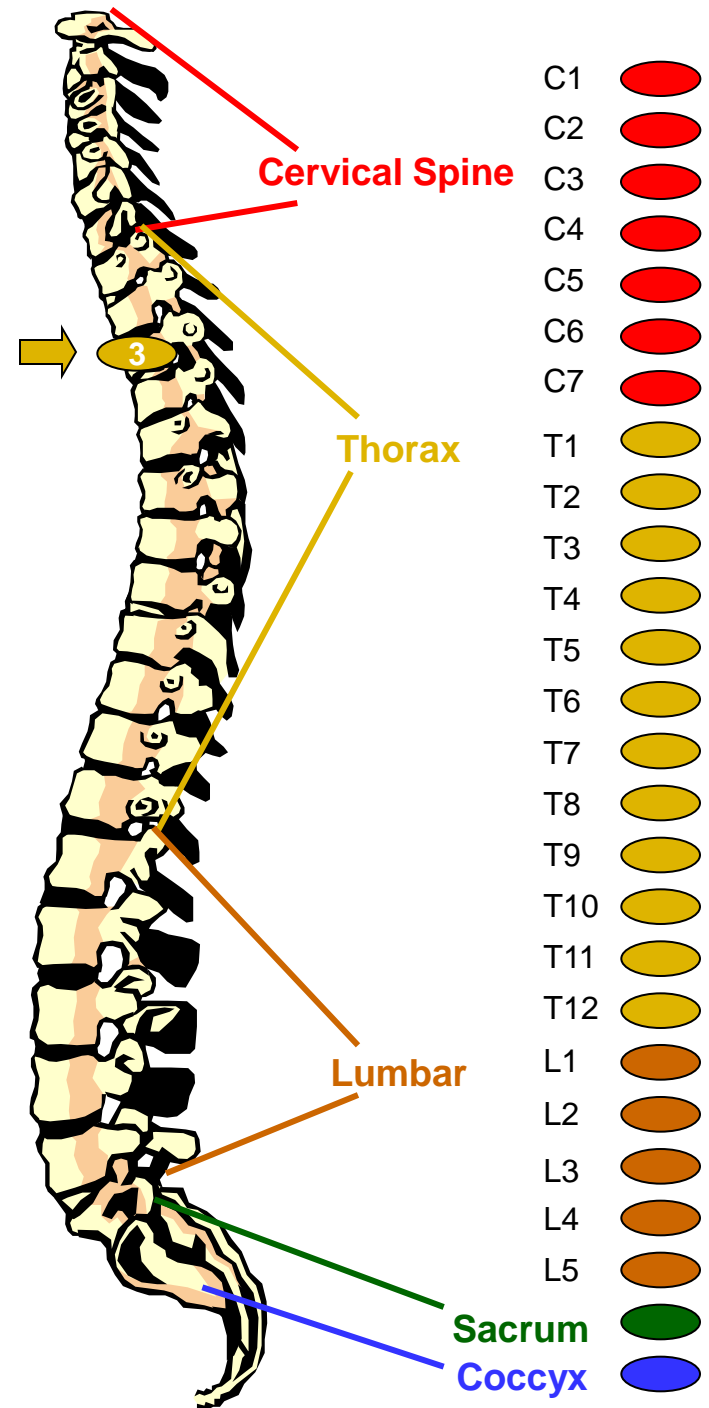
3rd Thoracic Vertebra

Areas controlled by Nerves:

- Lungs
- Bronchial tubes
- Pleura
- Chest
- Breast

Possible Effects of Malfunction (due to subluxation)

- Bronchitis
- Pleurisy
- Pneumonia
- Congestion
- Influenza





Virtual Tour of the Spine

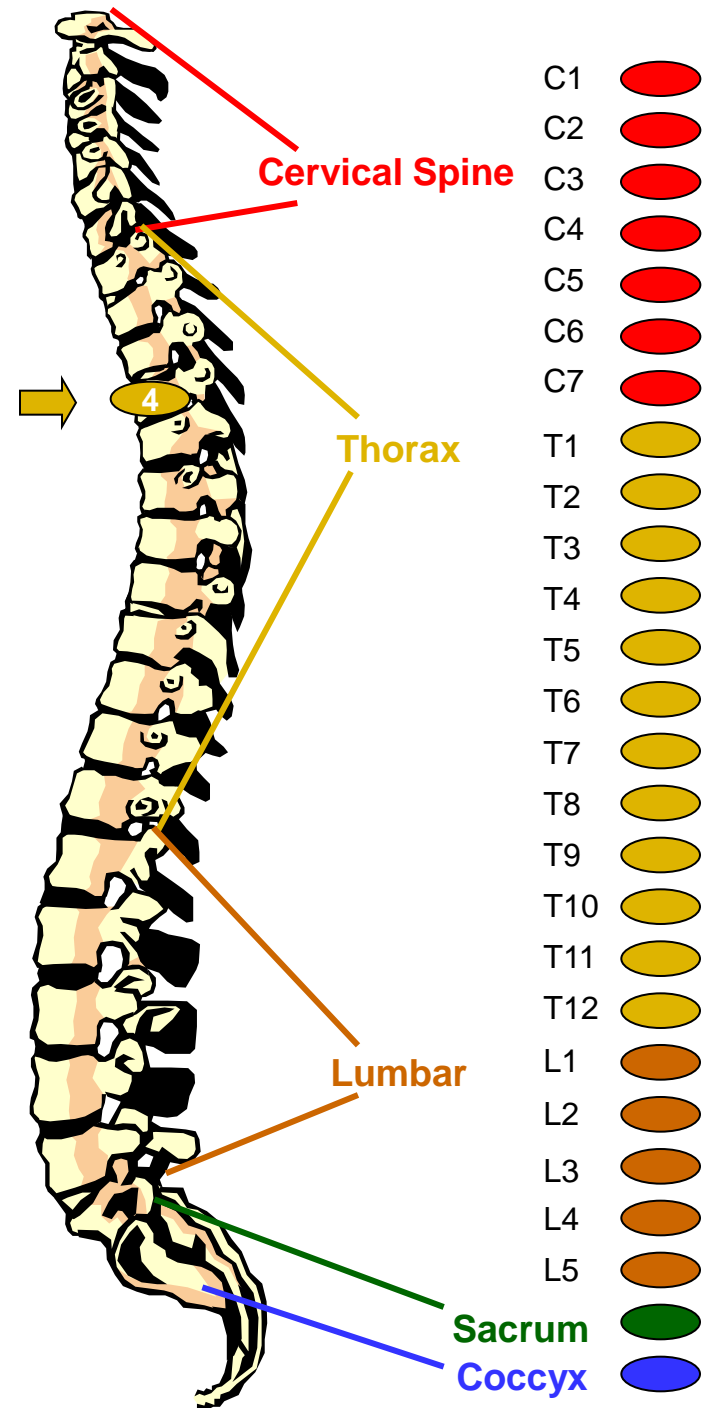
4th Thoracic Vertebra

Areas controlled by Nerves:

- Gall bladder
- Common duct

Possible Effects of Malfunction (due to subluxation)

- Gall bladder conditions
- Jaundice
- Shingles





Virtual Tour of the Spine

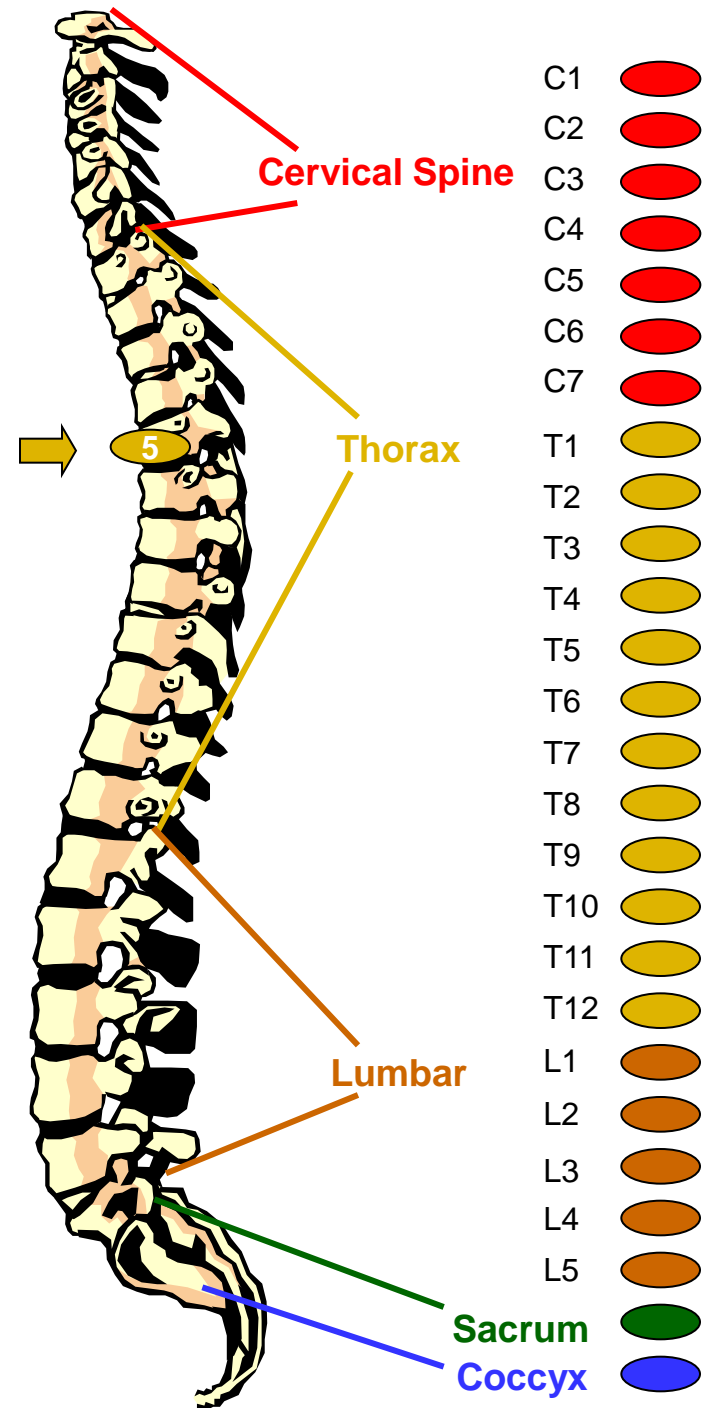
5th Thoracic Vertebra

Areas controlled by Nerves:

- Liver
- Solar plexus
- Blood

Possible Effects of Malfunction (due to subluxation)

- Liver conditions
- Fevers
- Low blood pressure
- Anemia
- Poor circulation
- Arthritis





Virtual Tour of the Spine

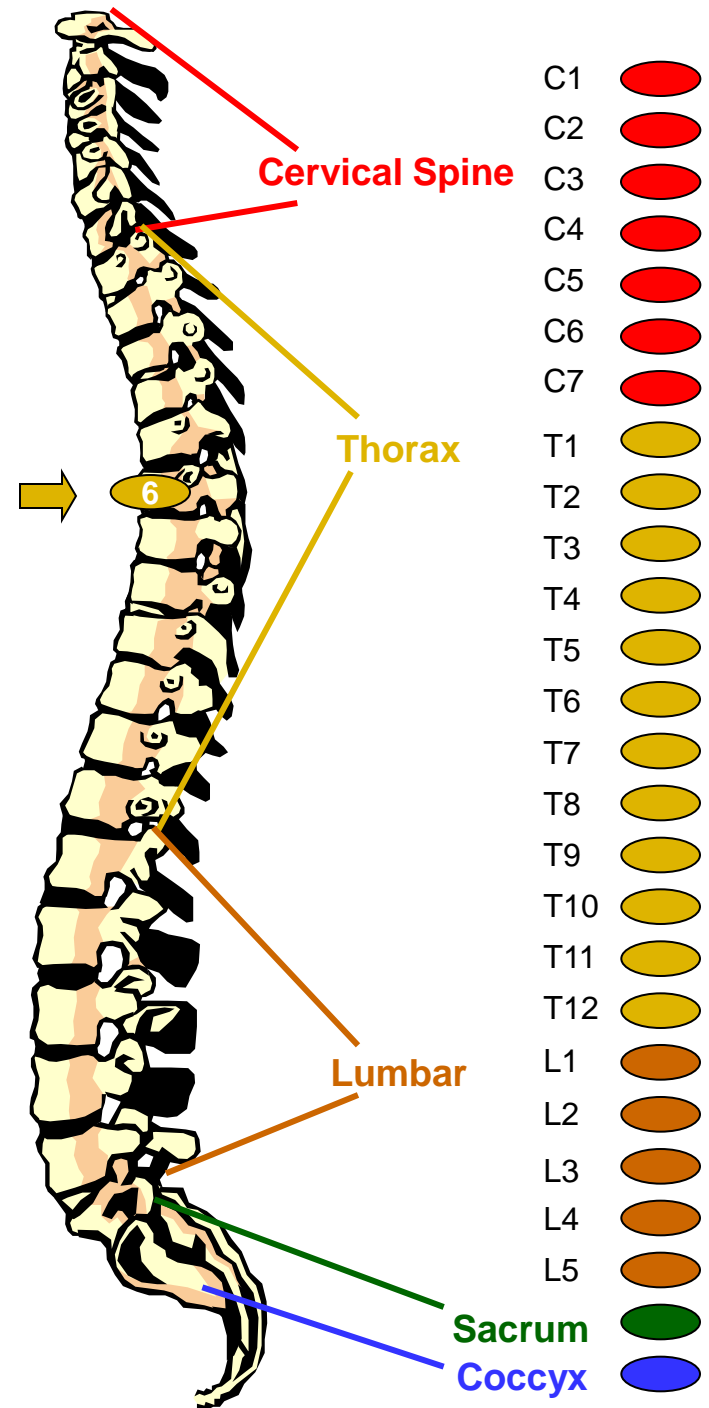
6th Thoracic Vertebra

Areas controlled by Nerves:

- Stomach

Possible Effects of Malfunction (due to subluxation)

- Stomach troubles
- Nervous stomach
- Indigestion
- Heartburn
- Dyspepsia





Virtual Tour of the Spine

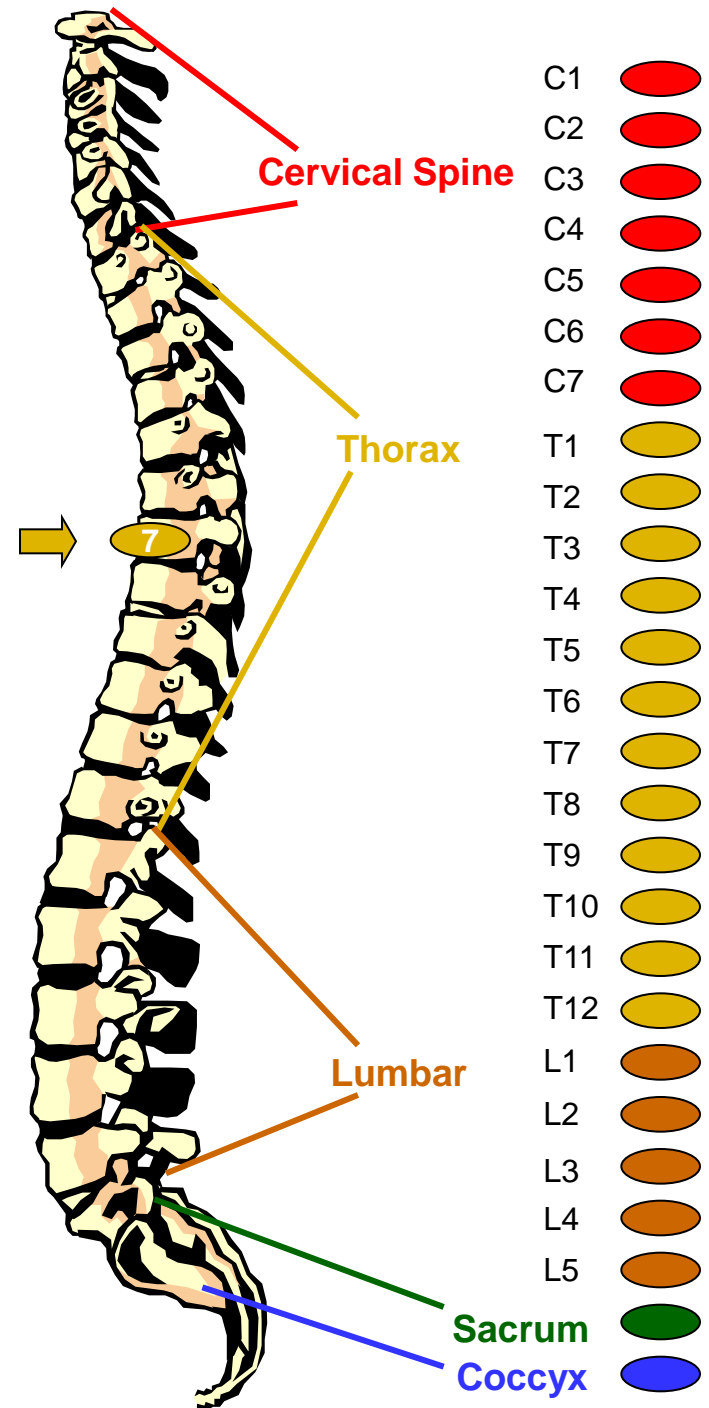
7th Thoracic Vertebra

Areas controlled by Nerves:

- Pancreas
- Duodenum

Possible Effects of Malfunction (due to subluxation)

- Ulcers
- Gastritis





Virtual Tour of the Spine

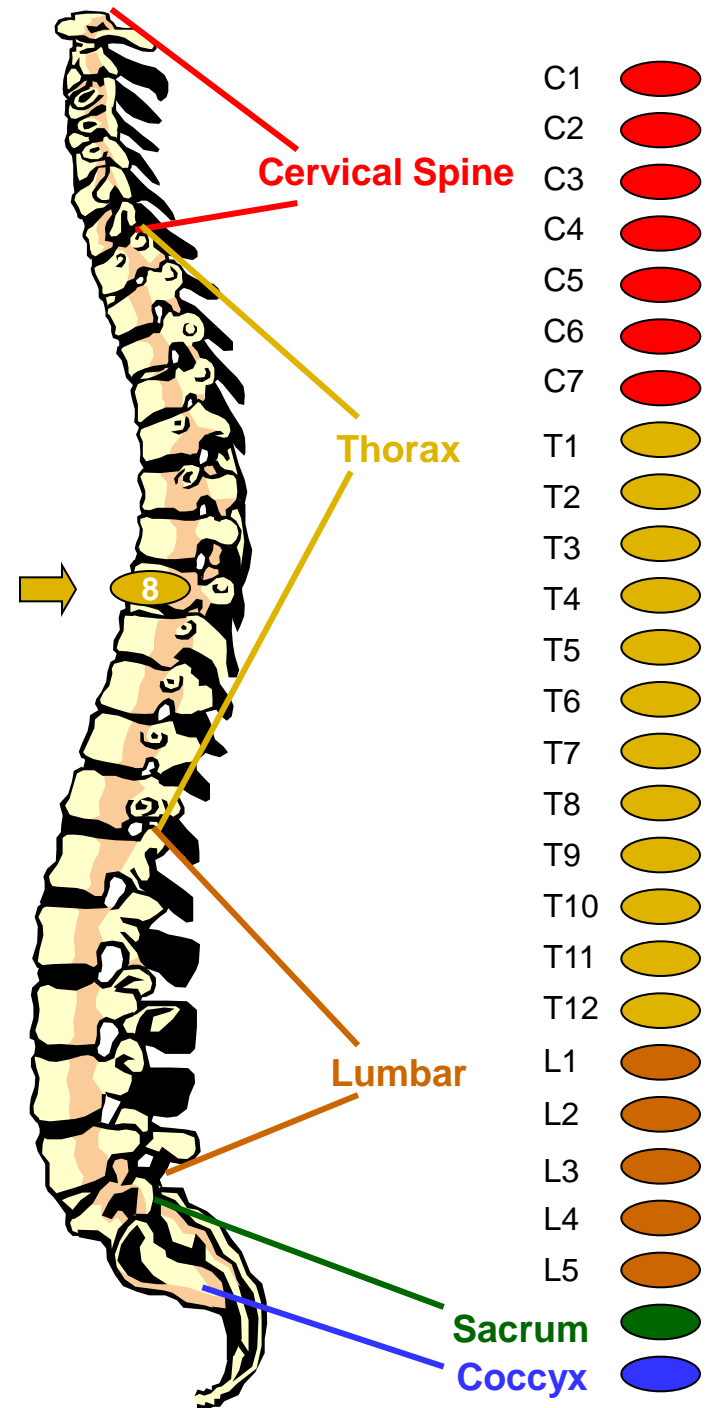
8th Thoracic Vertebra

Areas controlled by Nerves:

- Spleen

Possible Effects of Malfunction (due to subluxation)

- Low resistance to colds and disease





Virtual Tour of the Spine

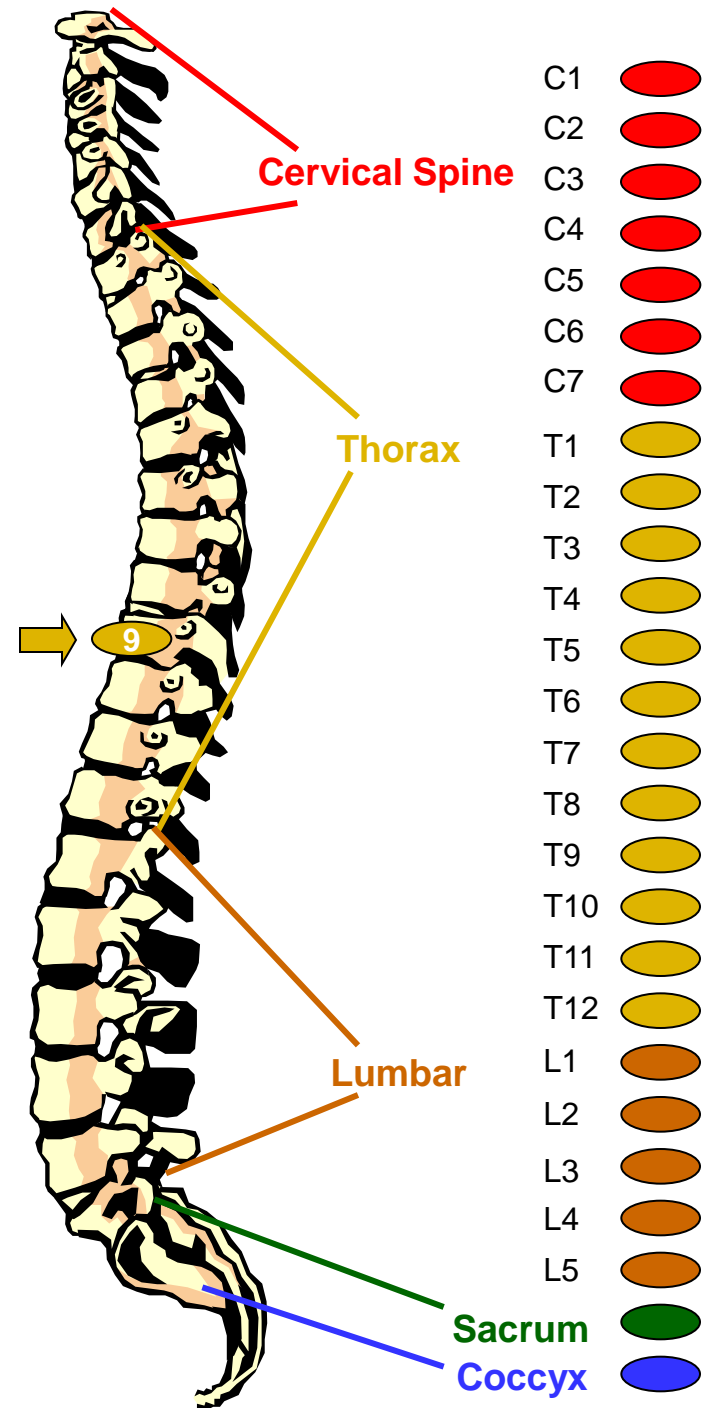
9th Thoracic Vertebra

Areas controlled by Nerves:

- Adrenal glands
- Supra-renal glands

Possible Effects of Malfunction (due to subluxation)

- Allergies
- Hives





Virtual Tour of the Spine

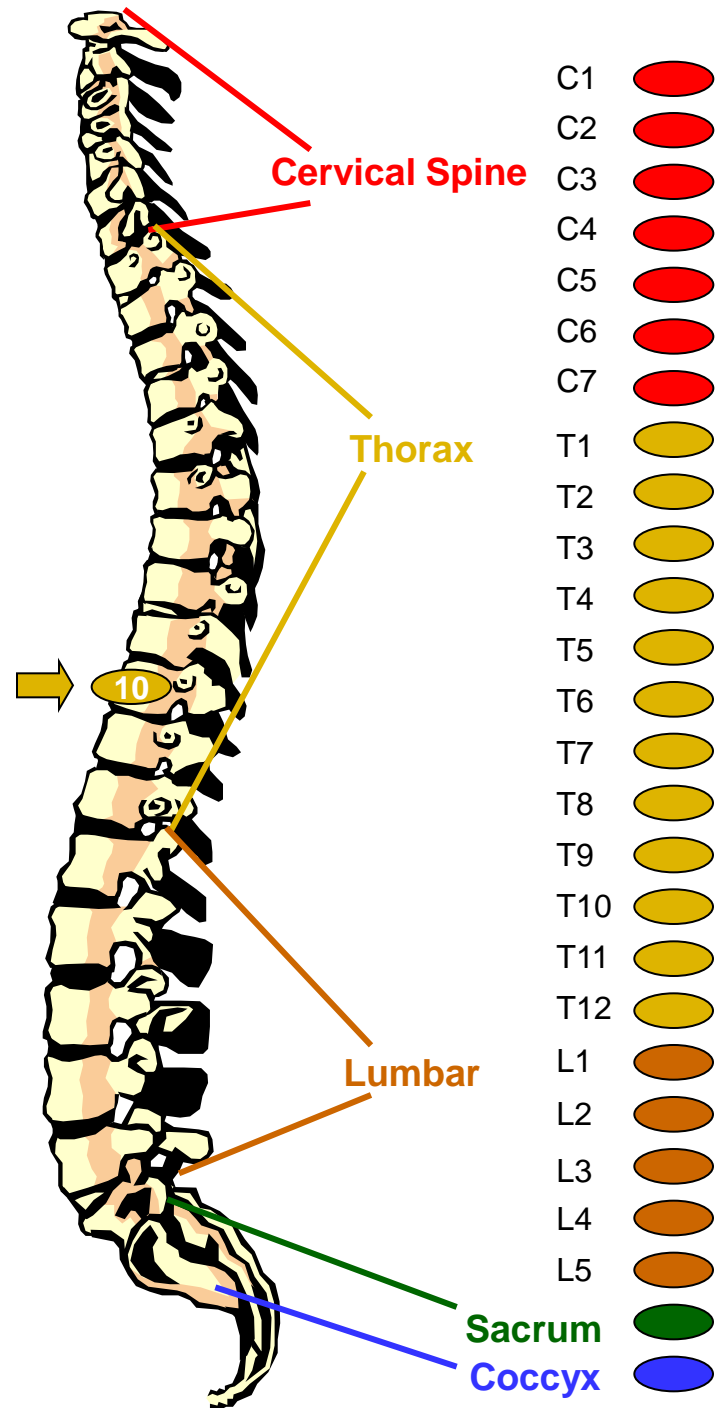
10th Thoracic Vertebra

Areas controlled by Nerves:

- Kidneys

Possible Effects of Malfunction (due to subluxation)

- Kidney troubles
- Hardening of the arteries
- Chronic tiredness
- Nephritis
- Pyelitis





Virtual Tour of the Spine

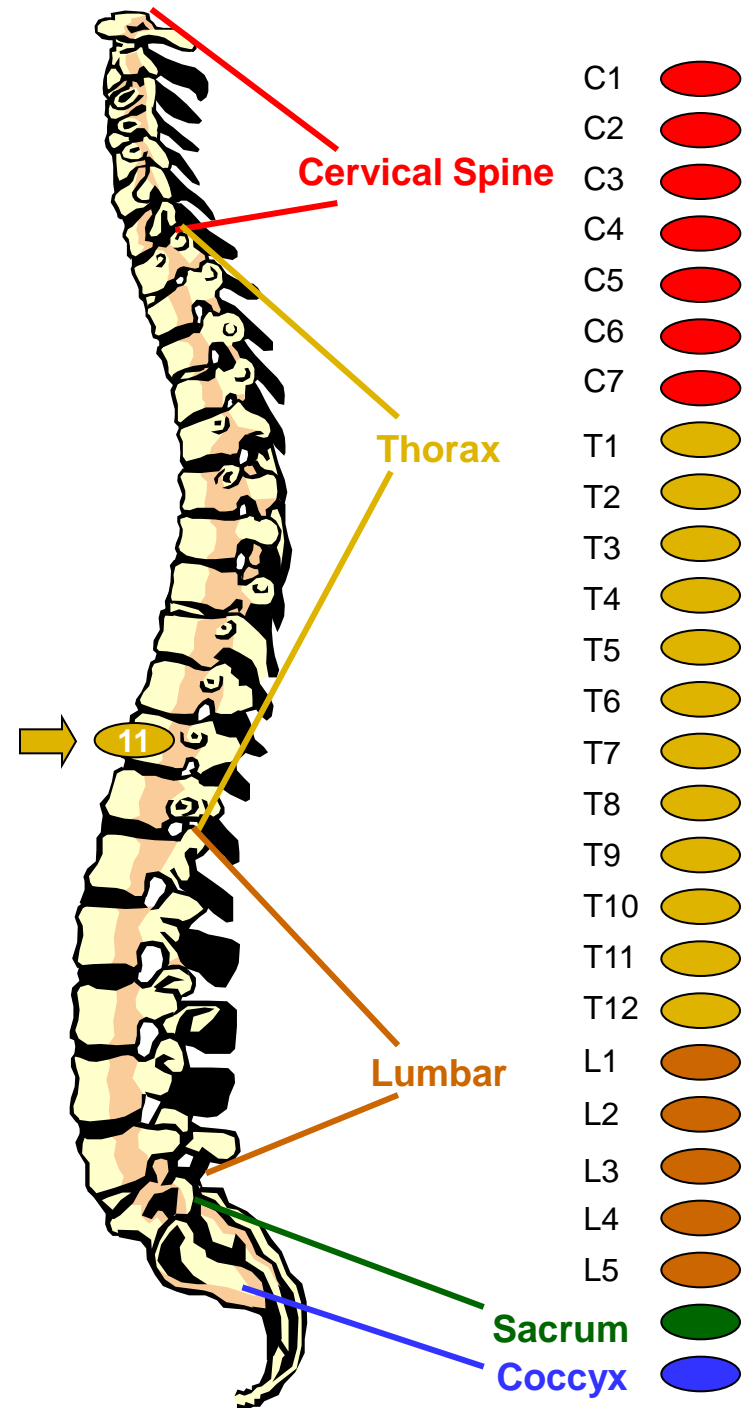
11th Thoracic Vertebra

Areas controlled by Nerves:

- Kidneys
- Ureters

Possible Effects of Malfunction (due to subluxation)

- Acne
- Pimples
- Eczema
- Boils





Virtual Tour of the Spine

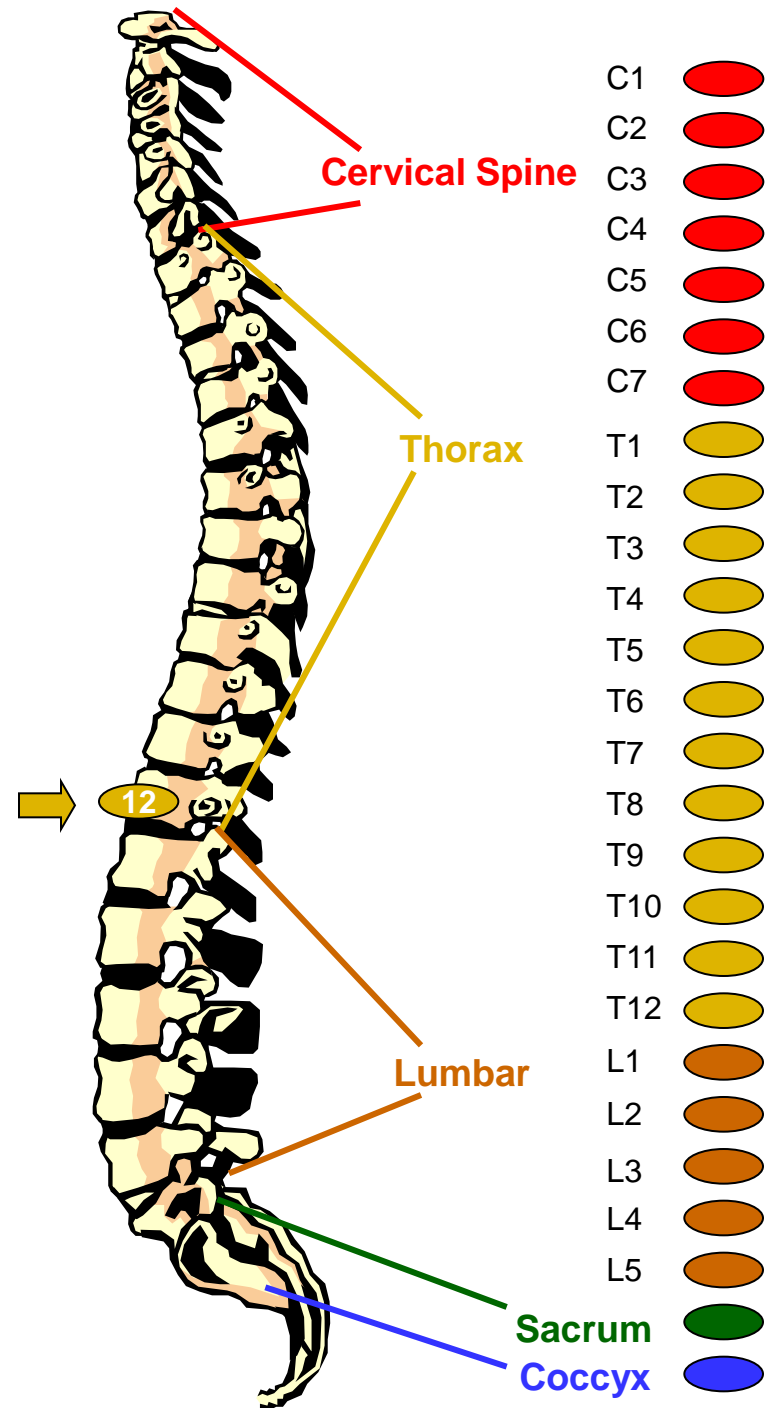
12th Thoracic Vertebra

Areas controlled by Nerves:

- Small intestines
- Lymph
- Circulation

Possible Effects of Malfunction (due to subluxation)

- Rheumatism
- Gas pains
- Sterility





Virtual Tour of the Spine

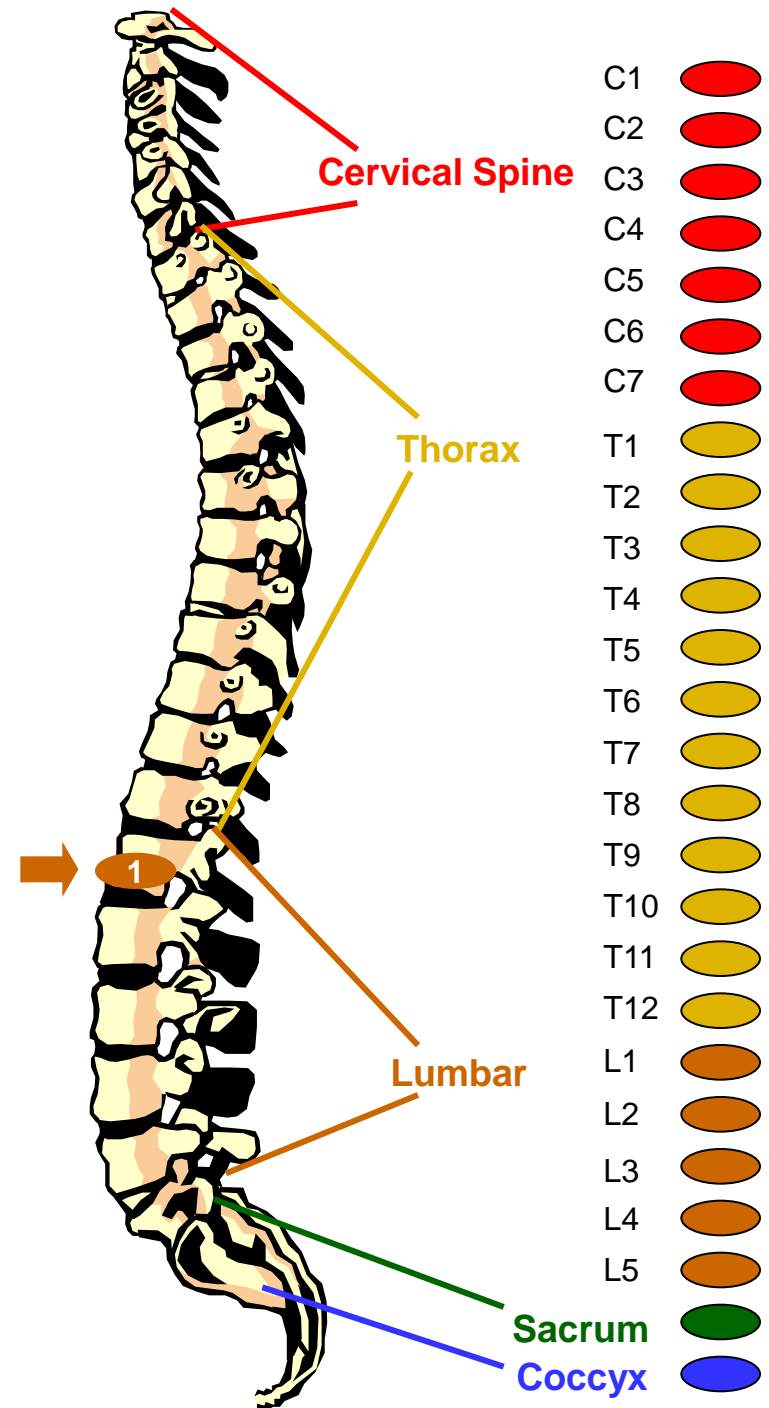
1st Lumbar Vertebra

Areas controlled by Nerves:

- Large intestines
- Inguinal rings

Possible Effects of Malfunction (due to subluxation)

- Constipation
- Colitis
- Dysentary
- Diarrhea
- Ruptures
- Hernias





Virtual Tour of the Spine

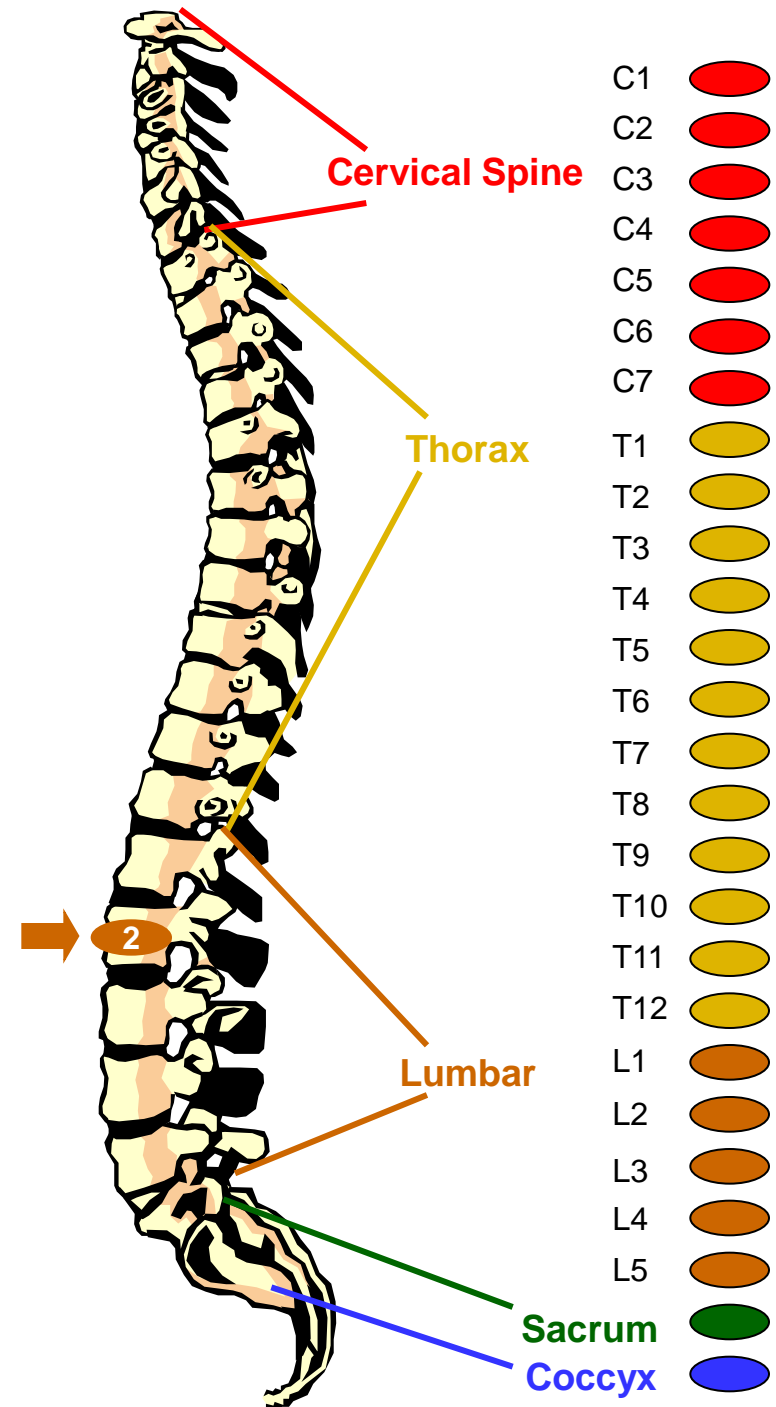
2nd Lumbar Vertebra

Areas controlled by Nerves:

- Appendix
- Abdomen
- Upper leg

Possible Effects of Malfunction (due to subluxation)

- Cramps
- Difficult breathing
- Acidosis
- Varicose veins





Virtual Tour of the Spine

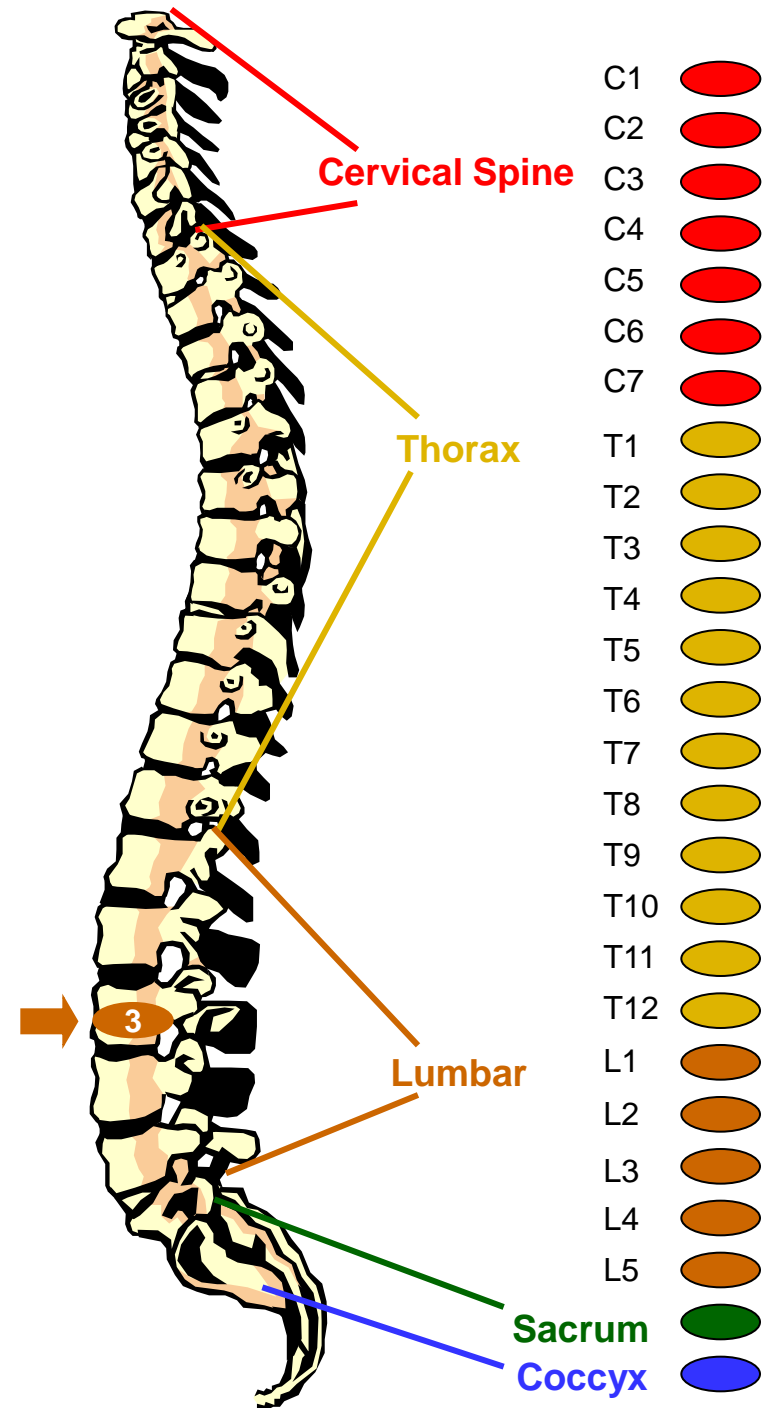
3rd Lumbar Vertebra

Areas controlled by Nerves:

- Sex organs
- Uterus
- Bladder
- Knees

Possible Effects of Malfunction (due to subluxation)

- Bladder troubles
- Menstrual troubles
- Miscarriages
- Bed wetting
- Impotency
- Change of life symptoms
- Knee pains





Virtual Tour of the Spine

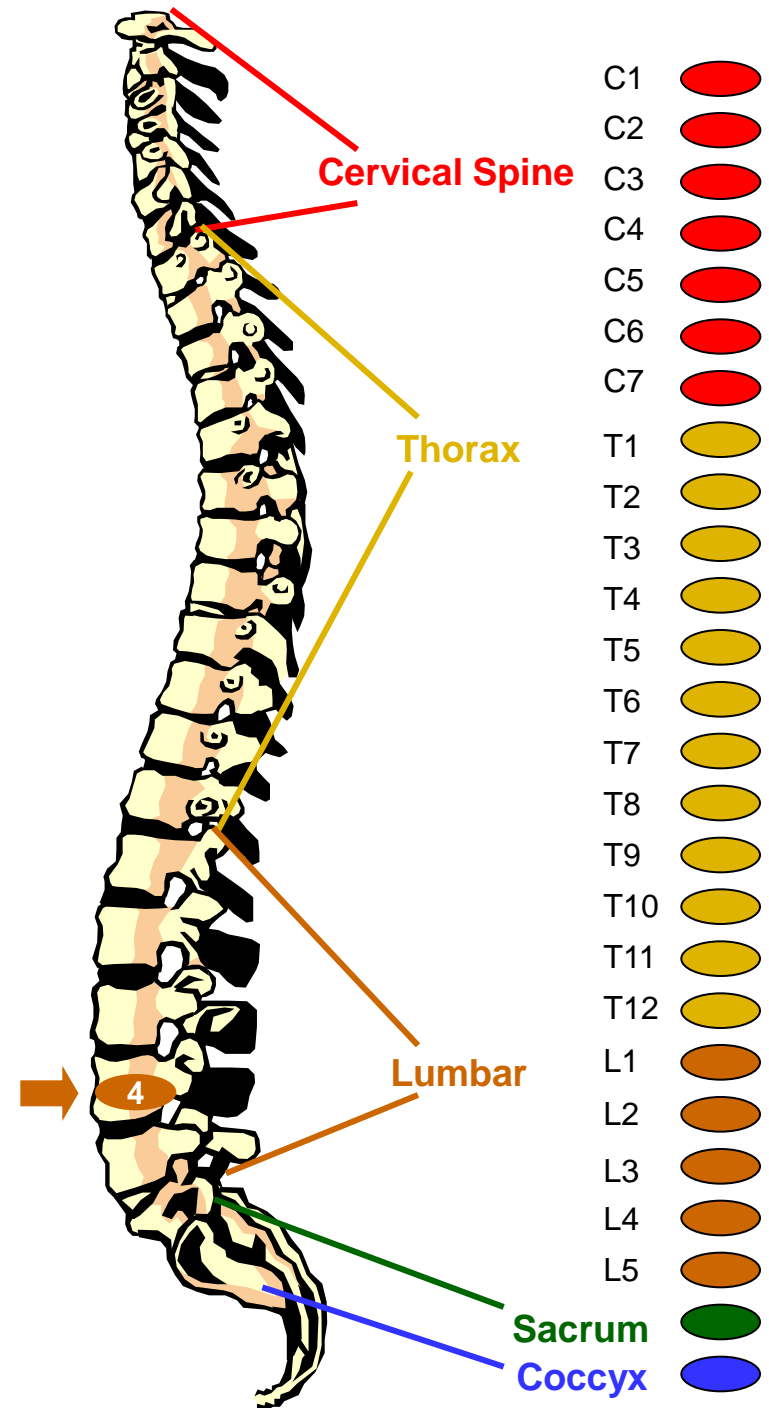
4th Lumbar Vertebra

Areas controlled by Nerves:

- Prostate gland
- Muscles of the lower back
- Sciatic nerve

Possible Effects of Malfunction (due to subluxation)

- Sciatica
- Lumbago
- Pain of frequent urination
- Backaches





Virtual Tour of the Spine

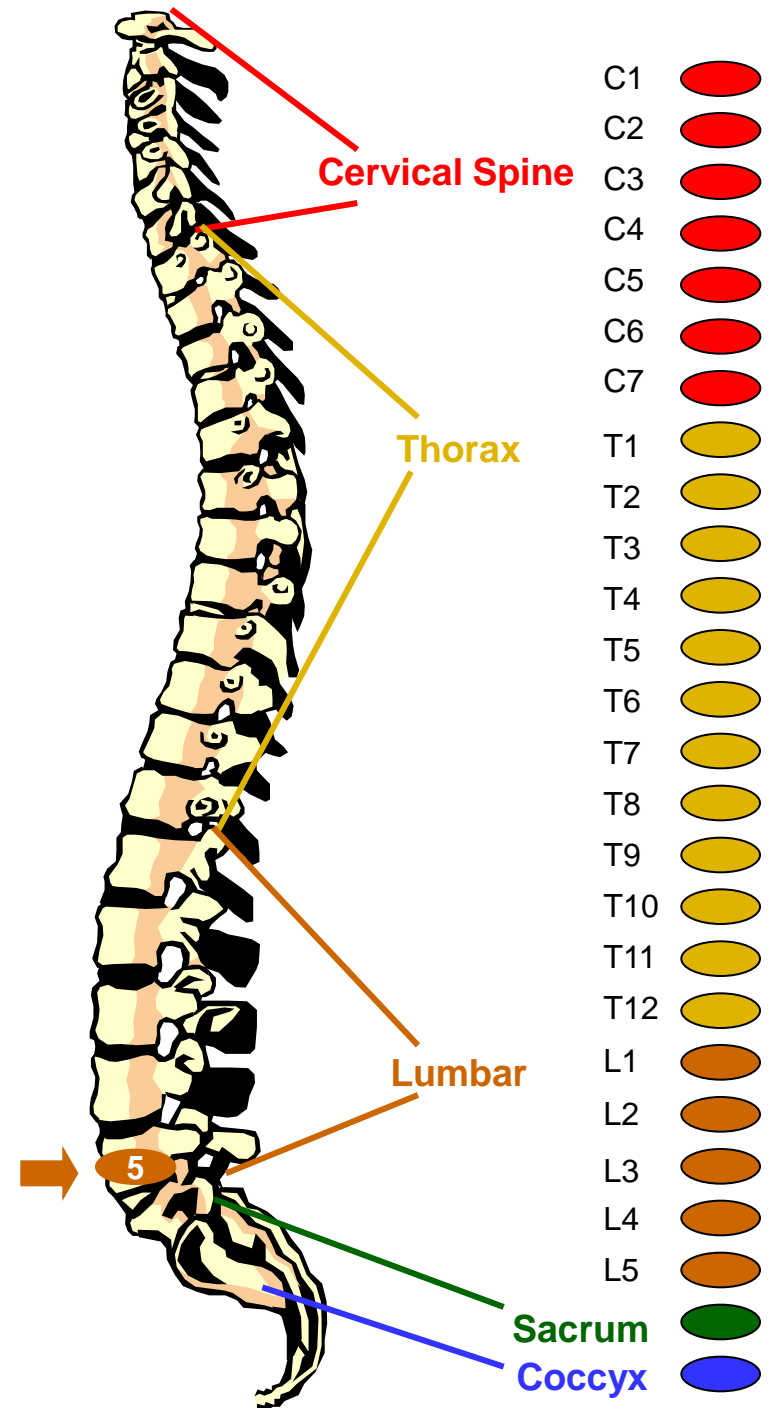
5th Lumbar Vertebra

Areas controlled by Nerves:

- Lower legs
- Ankles
- Feet

Possible Effects of Malfunction (due to subluxation)

- Poor circulation in the legs
- Swollen ankles
- Weak ankles and arches
- Cold feet
- Weakness in the legs
- Leg cramps





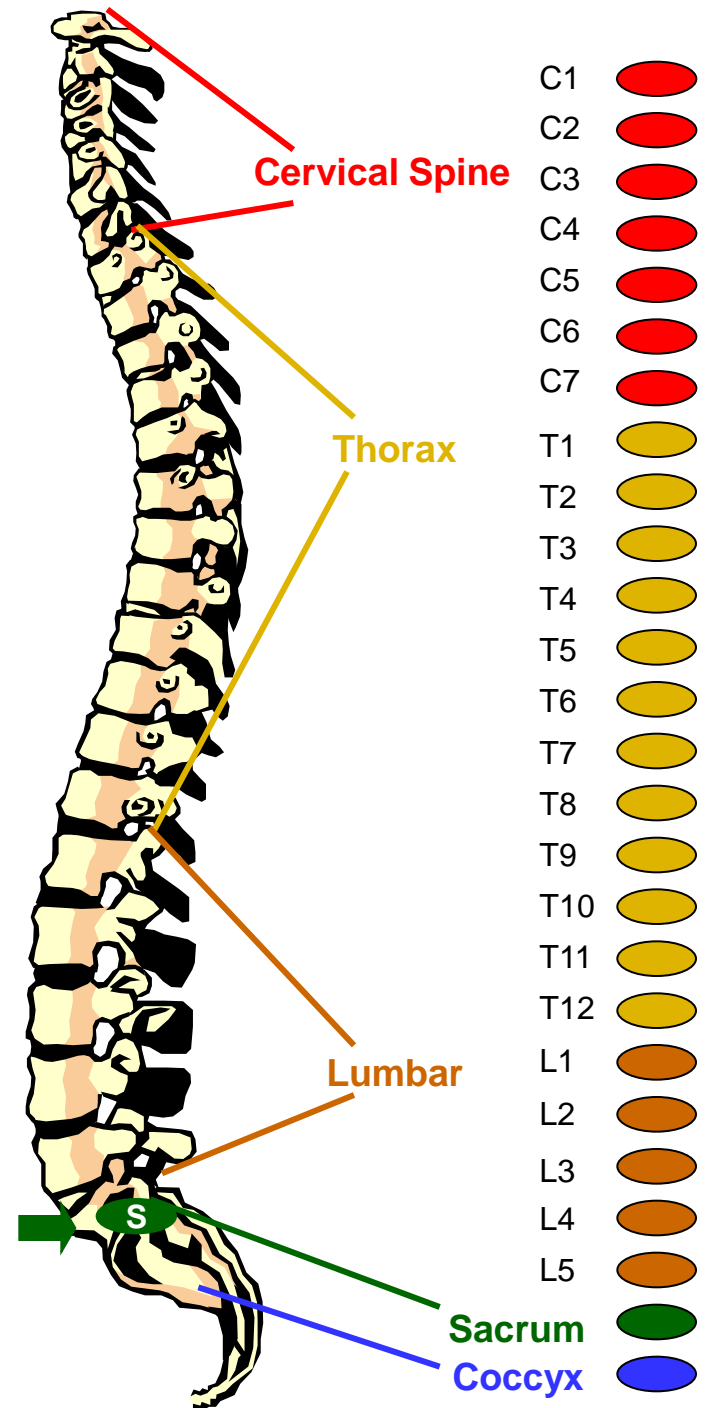
Virtual Tour of the Spine Sacrum

Areas controlled by Nerves:

- Hip bones
- Buttocks

Possible Effects of Malfunction (due to subluxation)

- Lower back pain
- Spinal curvature





Virtual Tour of the Spine

Coccyx

Areas controlled by Nerves:

- Rectum
- Anus

Possible Effects of Malfunction (due to subluxation)

- Haemorrhoids
- Pruritis (itching)
- Pain at end of spine upon sitting

